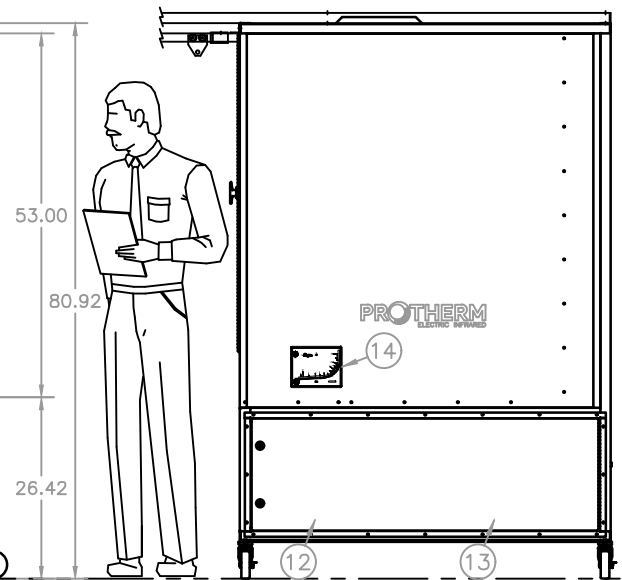
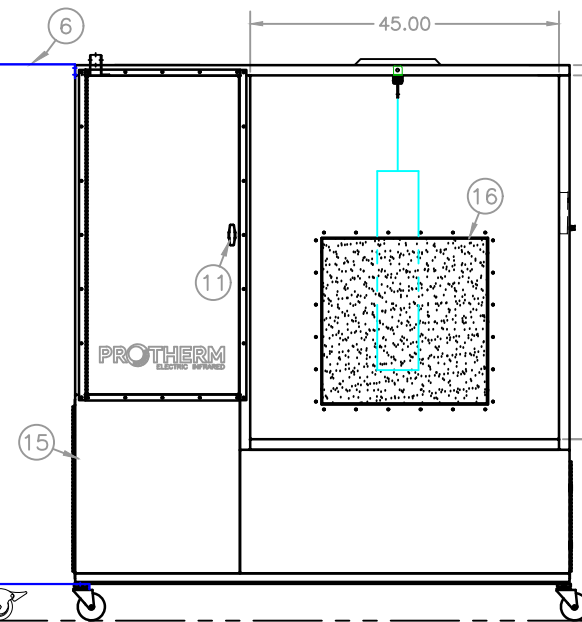
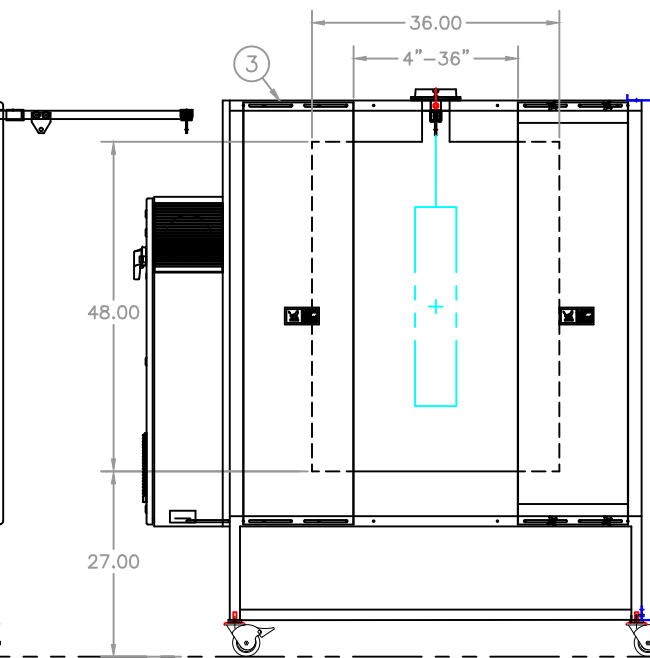
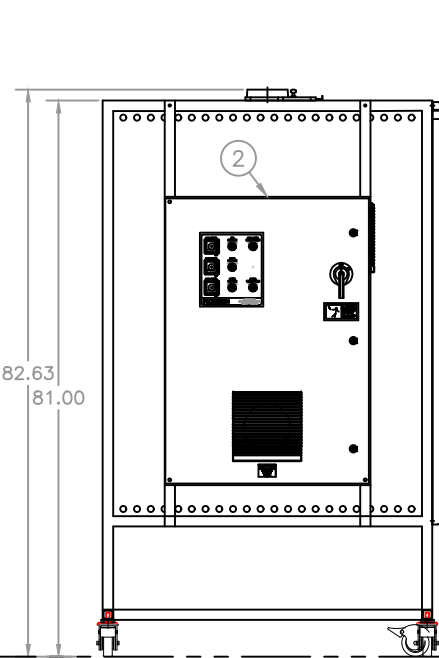
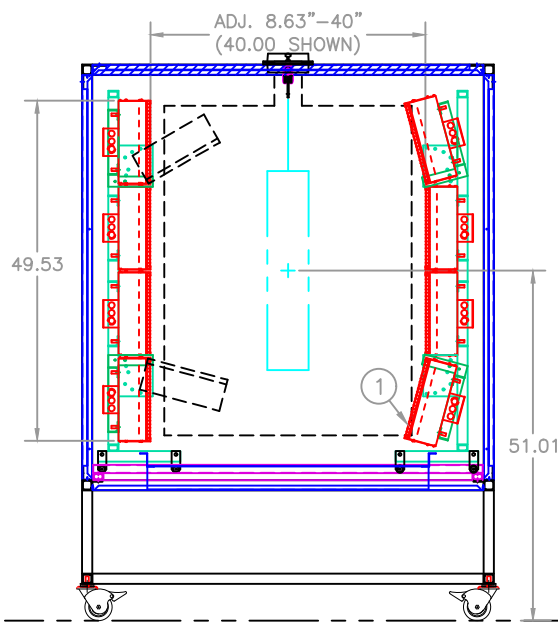
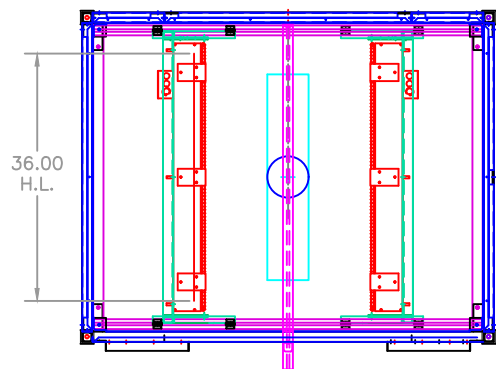
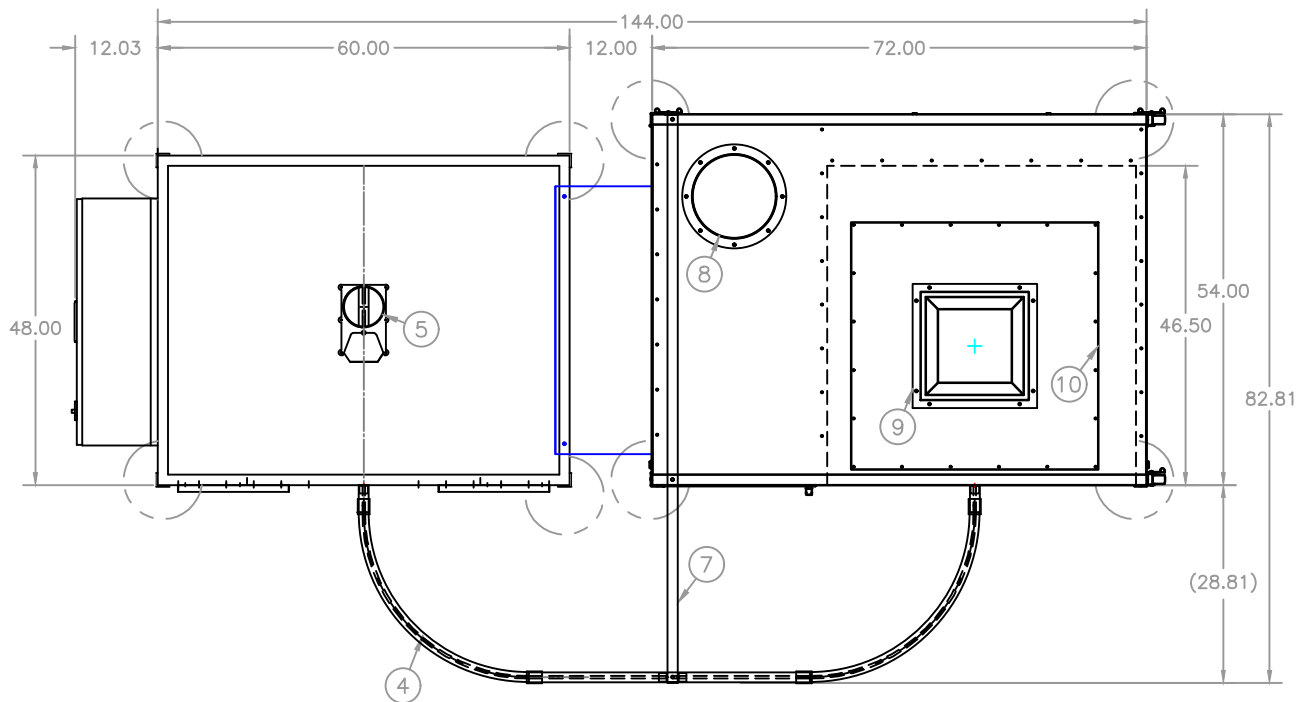


ITEM	FEATURE
1	ELECTRIC INFRARED HEATERS WITH ADJUSTABLE POWER AND POSITION
2	OPERATOR CONTROL PANEL
3	ADJUSTABLE END DOORS
4	BOLT ON OVERHEAD TROLLEY WITH MANUAL POSITION ROLLER PLATE
5	OVEN EXHAUST GATE, 6"
6	BOLT ON CONNECTING BARS
7	BOLT ON TROLLEY SUPPORT BAR
8	BOOTH EXHAUST COLLAR, 12"
9	HIGH INTENSITY LED BOOTH LIGHT FOR HAZARDOUS LOCATION, 120V, 75W
10	CLEAR POLYCARB SPRAY BOOTH TOP
11	OPTIONAL STORAGE CABINET
12	SIDE DOORS FOR ACCESS TO FILTERS, EXHAUST FAN, AND AIR CHAMBER
13	STAGE 2 FILTER, (2) 12"X26" CANISTERS
14	AIR PRESSURE METER
15	BACKWARD CURVED IMPELLER WITH 2 HP INVERTER DUTY MOTOR
16	STAGE 1 FILTER, 24" POLYESTER FILTER PAD
17	
18	

OPERATING PARAMETERS	
PRODUCT:	VARIOUS
MAX HEIGHT:	<36"
MAX WIDTH:	<30"
MAX DEPTH:	<30"
CONVEYOR SPEED:	MANUAL
SYSTEM VOLTS/PHASE:	480/3
MAX CURRENT LOAD:	93 AMPS
TOTAL HTR WATTS:	74.5 kW



OVEN FRONT SECTIONAL VIEW

OVEN LEFT SIDE VIEW

OVEN FRONT VIEW

SPRAY BOOTH FRONT VIEW

SPRAY BOOTH RIGHT SIDE VIEW

- 4) ESTIMATED WEIGHTS OF 1500 LBS FOR OVEN, 1200 LBS FOR SPRAY BOOTH.
- 3) TOP AND BOTTOM HEATERS ALL ROTATE TO 90 DEGREES.
- 2) OVEN AND SPRAY BOOTH PAINTED EIDER WHITE
- 1) SPRAY BOOTH DESIGNED FOR POWDER APPLICATION ONLY! LIQUID WILL REQUIRE DIFFERENT FILTERS.

**PROTHERM**  
ELECTRIC INFRARED

PROTHERM LLC  
801 CENTRAL AVE N  
BRANDON MN 56315 USA  
WWW.PRO-THERM.COM

DRAWN BY  
**WENDT**  
DATE  
**28MAR25**

THIS PRINT CONTAINS CONFIDENTIAL INFORMATION WHICH IS THE PROPERTY OF PROTHERM LLC. BY ACCEPTING THIS INFORMATION, THE BORROWER AGREES THAT IT WILL NOT BE USED FOR ANY PURPOSE OTHER THAN THAT FOR WHICH IT IS LOANED!

SCALE  
**NONE**  
DRAWING NO.  
**MML-SALES**

COMPANY/PART NAME  
**PROTHERM SALES**

SHEET NO.  
**1 OF 1**

NO	REVISION	BY	DATE

MATL  
**MINI-MOBILE LARGE SPRAY & CURE SYS**

QTY  
**1**